



Case Study - L&S Engineers

Automation drives unprecedented operational efficiency with a 100% increase in pick rates



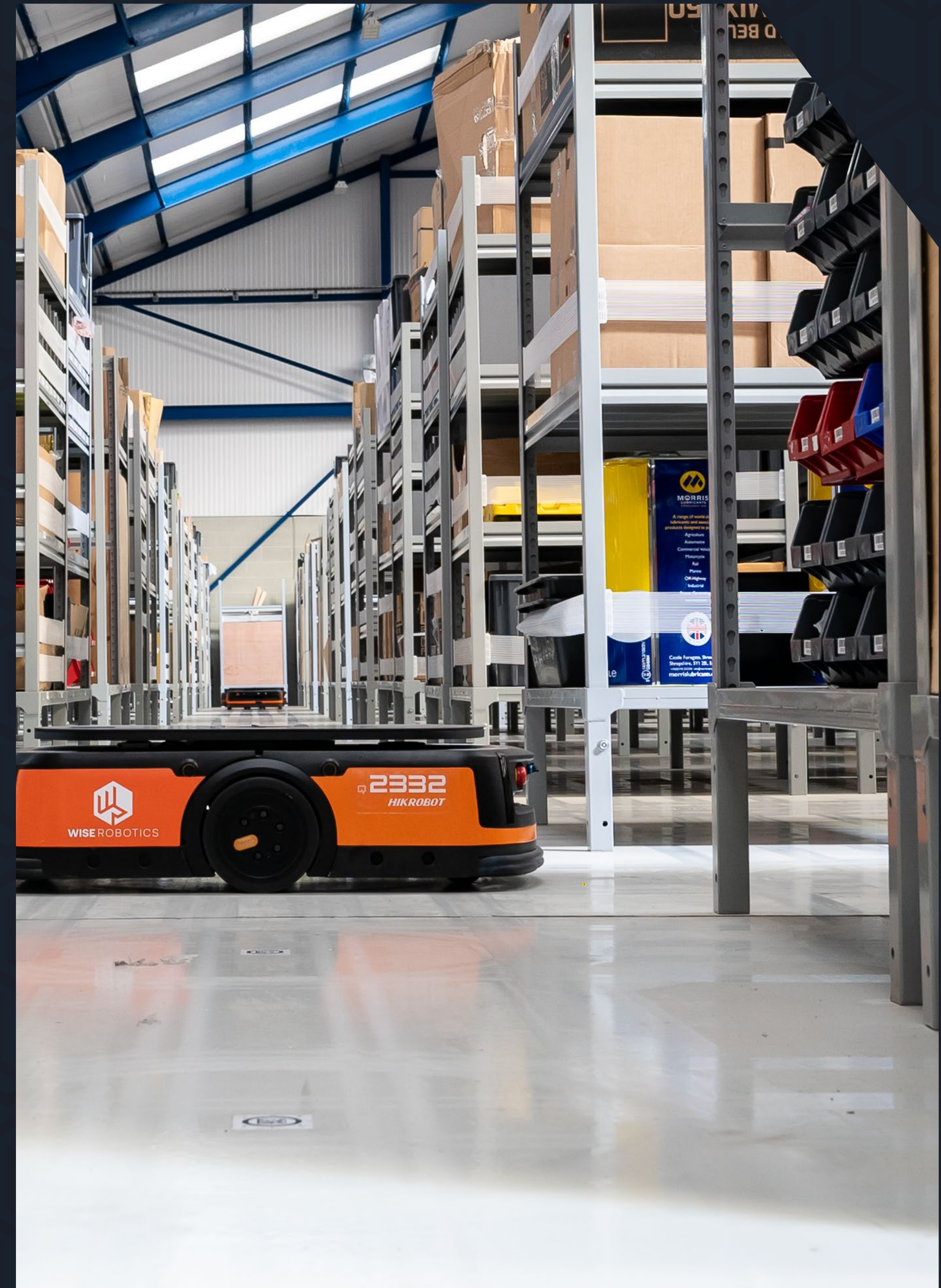
A new journey powered by autonomous warehouse robotics

Founded in 1971, L&S Engineers is the country's leading retailer of spare parts for organisations in the construction, plant hire and groundcare industries.

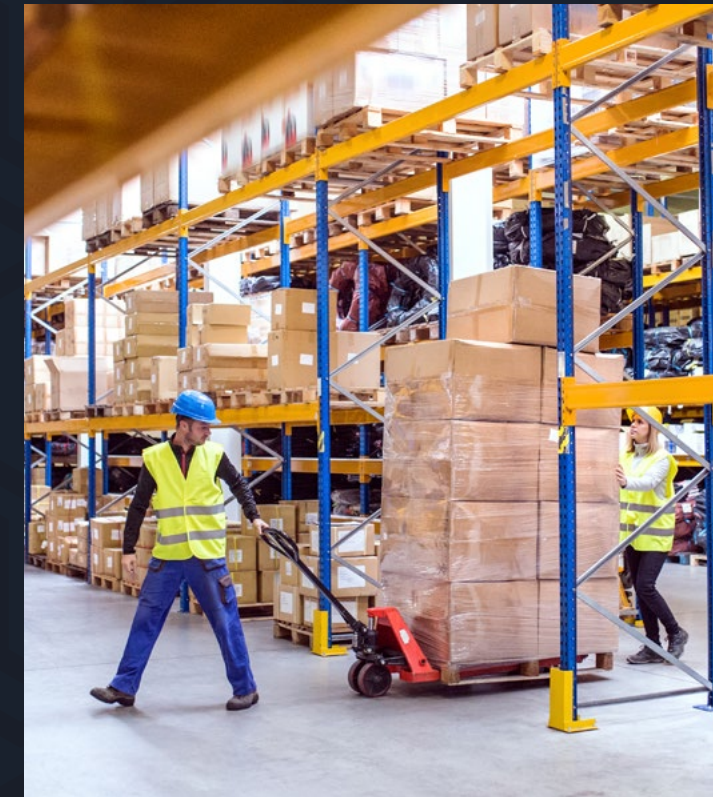
In 2020, the business needed to upscale its warehousing operations to combat ongoing and intensifying bottlenecks.



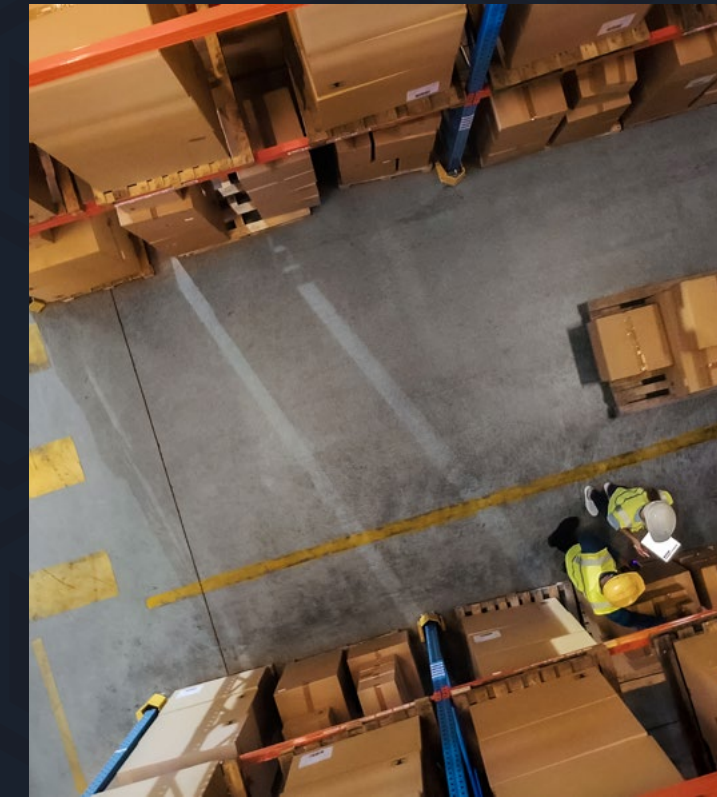
[Watch the case study video](#)



THE CHALLENGES



Growing storage requirements



Contraction of the labour market



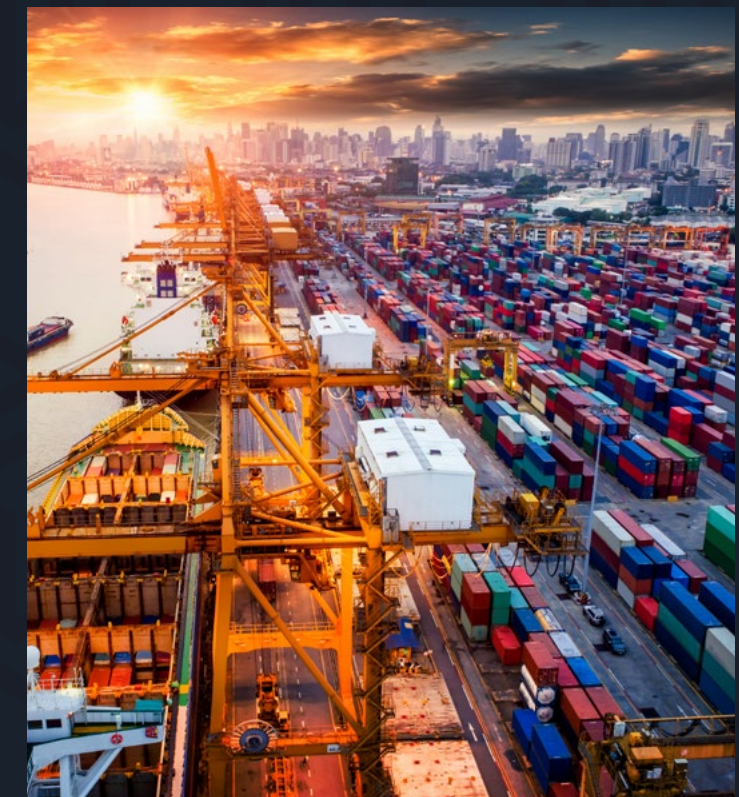
Working conditions



Picking and replenishment accuracy



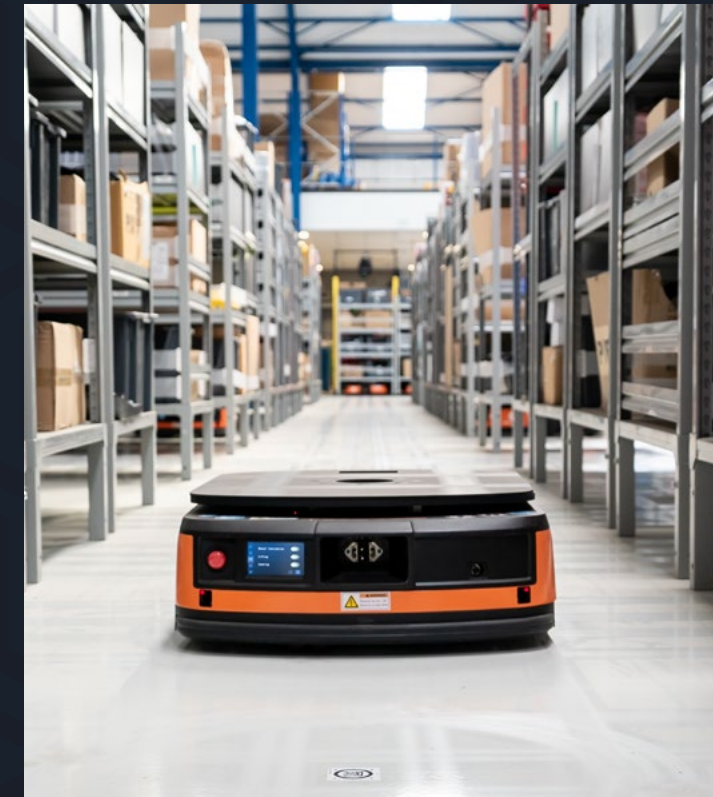
Overflowing bins



Supply chain disruptions

THE WISE ROBOTICS SOLUTION

Intelligent robotic automation that brings goods from across the grid directly to the pick station.



40
Q3 AMRs



650
racks



50,000
free bins



8
pick-to-light
workstations



Flexible warehouse
infrastructure



6-week
implementation
process

THE RESULTS



Increased daily order shipping



Increased storage density



Capacity to expand warehouse operations without disruption



100%
increase in pick rate



Reduced walking for pickers



Increased throughput

BEFORE



The main challenges were coping with increasing demand while maintaining accuracy. And also increasing stock holding due to supply chain disruptions.

– Ian Shay, Commercial Director at L&S Engineers

While these challenges were exacerbating across the industry, L&S' innovation and pre-existing technology investments had put them at an advantage.



We've grown fourfold in the last 10 years, we've invested heavily in technology and we're very data-centric. It was a natural progression for us to carry on that automation.

– Ian Shay, Commercial Director at L&S Engineers



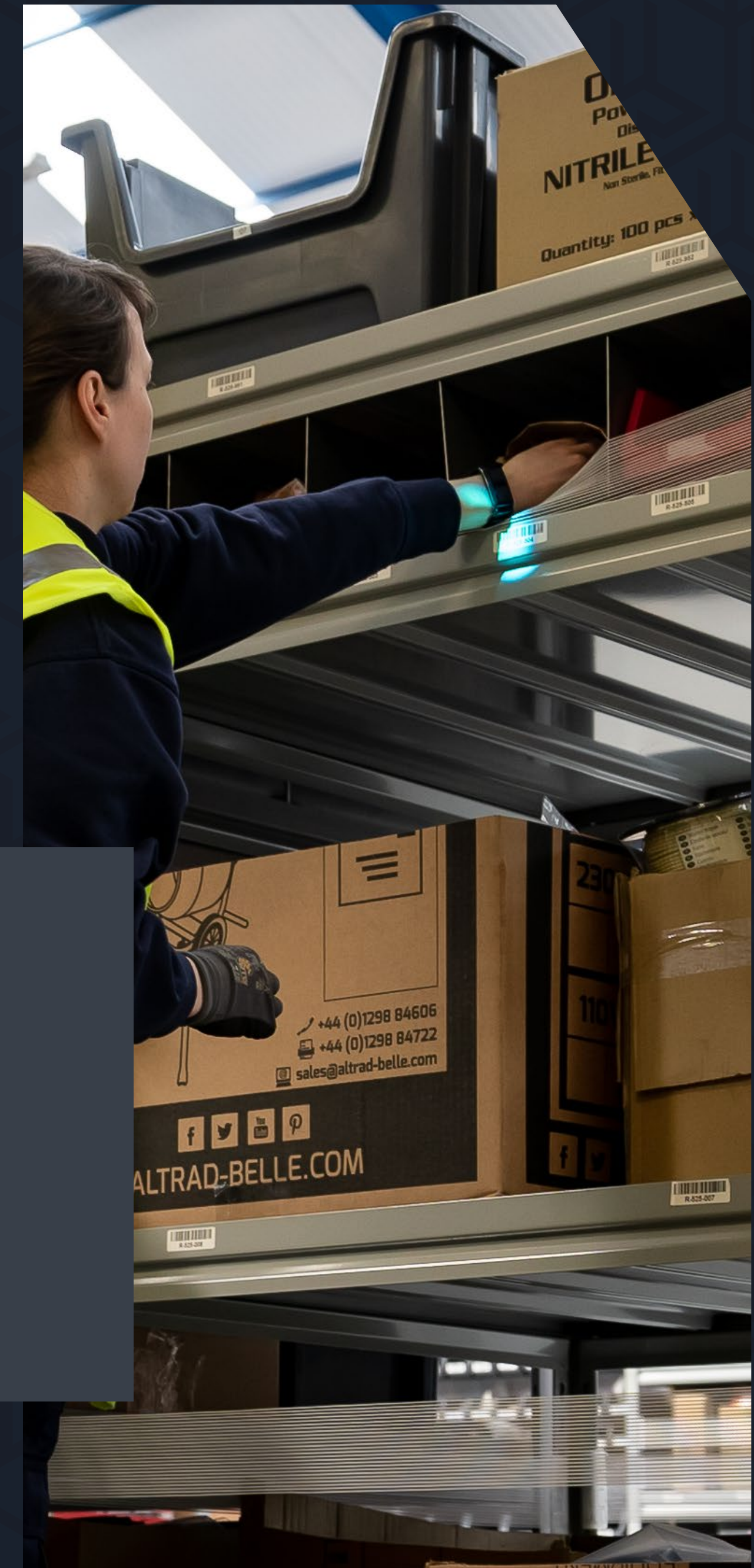
GOODS-TO-PERSON

With Wise Robotics, L&S Engineers upscaled their warehouse automation processes by investing in an autonomous goods-to-person solution.

Goods-to-person solutions are designed to reduce walking through warehouses by automating the movement of goods and racks. Having pickers stationed and the stock delivered to them enables faster and more accurate order fulfilment.

“ The nature of goods-to-person solution is there no fixed infrastructure. The only thing fixed at L&S are the workstations, everything else is fully flexible. Nothing is bolted down. So that’s a key factor for SME clients, as their warehouse grows and their business flexes it could upscale or it could downscale, they know they don’t have a massive investment to move.

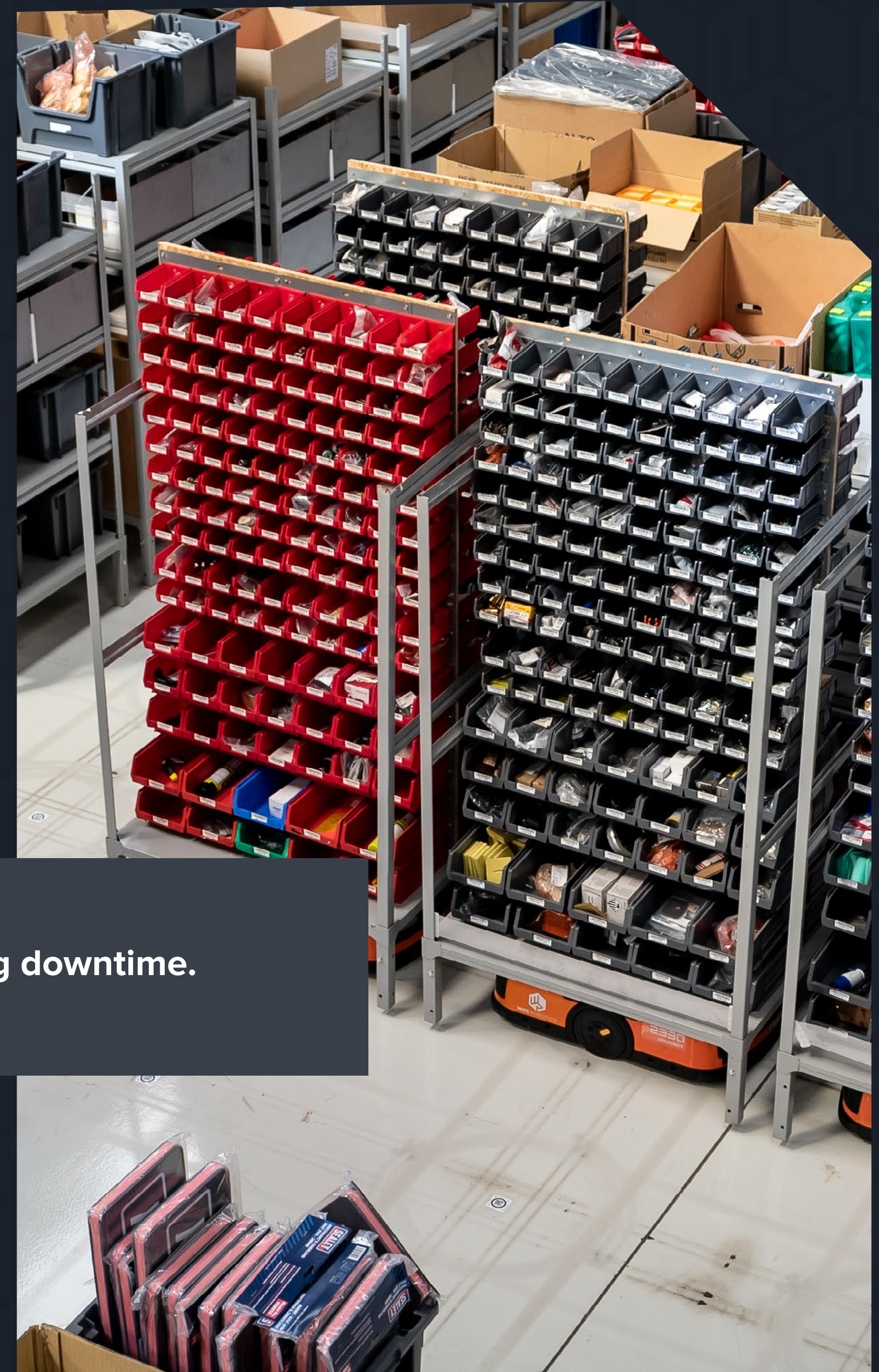
– Joe Daft, Head of Robotics at Wise Robotics



THE IMPLEMENTATION

L&S Engineers' success factors were at the forefront of this project and by collaborating with [Wise Robotics' expertise](#), the right solution was created for their current and future needs.

The implementation took just six weeks without causing downtime.



THE IMPACT: EFFICIENCY



By removing the need for the picker to physically travel between locations, we've been able to double our pick rate at a station. It's much less physically demanding.

– Ian Shay, Commercial Director at L&S Engineers

Before:

400-500
lines picked per picker

After:

1,000-1,100
lines picked per picker



100%
increase in pick rate

THE IMPACT: ACCURACY



One of the biggest improvements we've seen is the reduction of picking errors. We've got a pick-to-light system that highlights the bin to pick from. Because we're at a fixed station and we're not trying to do the operation at the bin, we've seen our error rate reduce by half.

– Ian Shay, Commercial Director at L&S Engineers

Error rate reduced by
half



THE IMPACT: TIME



It takes me just a few seconds to pick an item. You save so much time. I cannot image life at L&S without the robots now.

– Iuliana Pelu, Picker at L&S Engineers



Maximising the full potential of warehouse space



Increasing throughput with the existing workforce



Lowering costs on additional staff and storage



Reducing errors

THE FUTURE



Our relationship with Wise Robotics is very good and we still work very closely with them. If we ever wanted to expand or move our operations, the scalability of the solution means it would be much more straightforward.

– Ian Shay, Commercial Director at L&S Engineers

In addition to the scalability of their current AMR solution, L&S Engineers has the dedicated and ongoing support of the Wise Robotics team.



Wise Robotics is constantly working with L&S to deliver maximum results. Beyond the robots are the software and the algorithms. The robots are one thing, they will do what they're told. As a partner, it's our job to interrupt L&S' data and mould our software to deliver the fastest ROI.

- Joe Daft, Head of Robotics at Wise Robotics

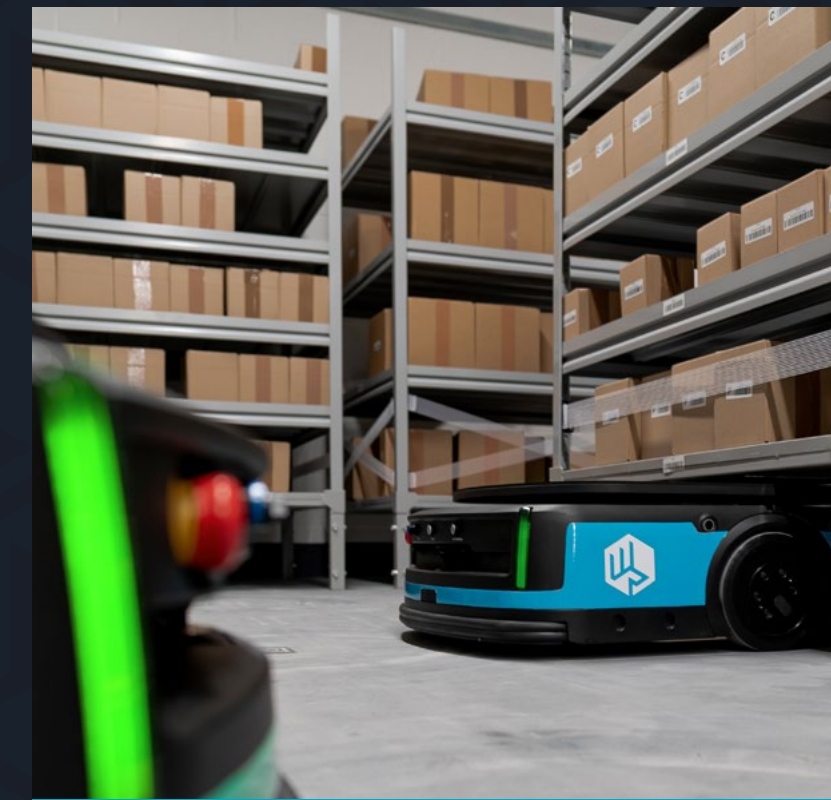


START YOUR AUTOMATION JOURNEY TODAY

Wise Robotics is a specialist provider of cutting-edge warehouse automation solutions which are fully scalable and flexible. Through a combination of state-of-the-art robotics, streamlined integration with your existing infrastructure and smart business intelligence software, we can transform your operations.

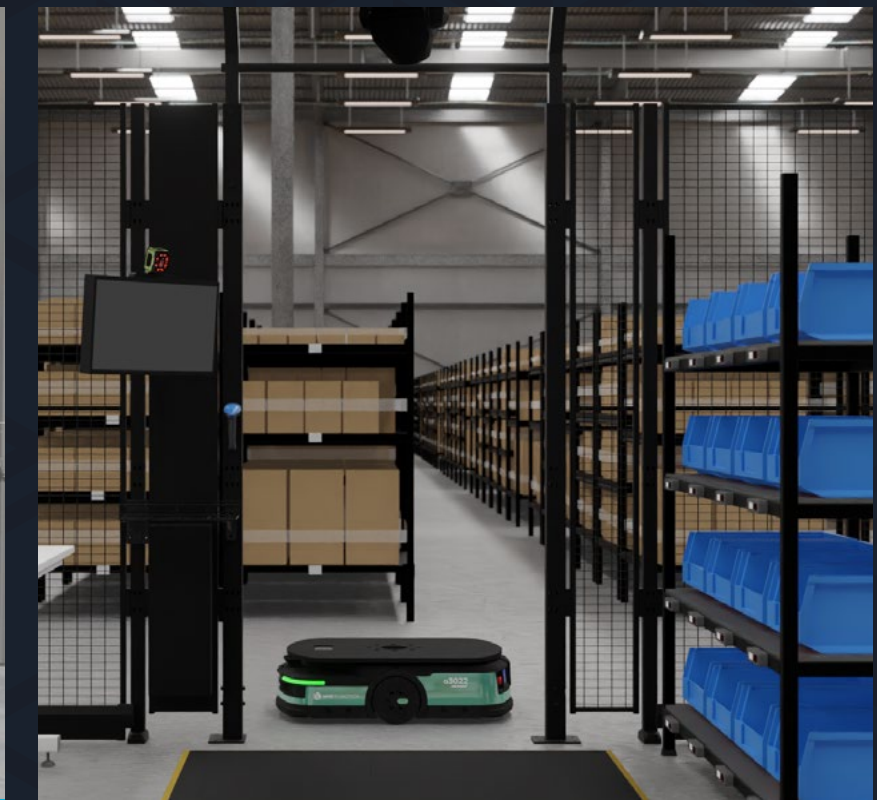
Our technology is designed to optimise your warehouse, order picking and manufacturing operations, all whilst speeding up fulfilment to meet the demands of your customers now and in the future.

WATCH CASE STUDY VIDEO



Discover more
about Wise Robotics

MORE →



Learn more about
our solutions

MORE →



Talk to one of
our experts

MORE →



Visit our Robotics
Demonstration Centre

MORE →